

# MULTIPRO COMFORT



The MultiPro Comfort range is specifically designed to provide a safe and comfortable area for people who are required to stand for long periods of time. With both the open and closed options the MultiPro Comfort can be used in wet and dry conditions and can also connect with the Grit, Gym and Grass tiles. With UV stabilisation the MultiPro Comfort tiles can be used outdoors.

## FEATURES

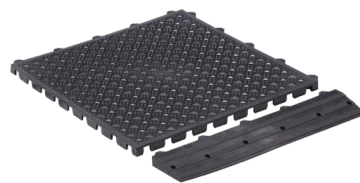
- Ideal for food areas, around machinery, packing areas, wet areas, playgrounds
- Ergonomic and anti-fatigue
- Modular design, interlocking to cover large areas
- Available with and without holes
- Strong and robust
- Edge ramps available to eliminate tripping hazards
- Excellent sound dampening
- Made from recycled material
- UV protected
- Indoor/outdoor use

CODE	DESCRIPTION	SIZE (mm)
<b>MultiPro Comfort</b>		
MPC5050	MultiPro Comfort, Closed	500 x 500
MPO5050	MultiPro Comfort, Open	500 x 500
<b>MultiPro Ramp</b>		
MRB50-SM	MultiPro Ramp, Male	500 x 100
MRB50-SF	MultiPro Ramp, Female	500 x 100
MRB50-CM	MultiPro Ramp, Male w. corner	600 x 100
MRB50-CF	MultiPro Ramp, Female w. corner	600 x 100
Ramps also available in yellow		

\*Mat sizes may vary + / - 5%



MultiPro Comfort - Open



MultiPro Comfort - Closed

